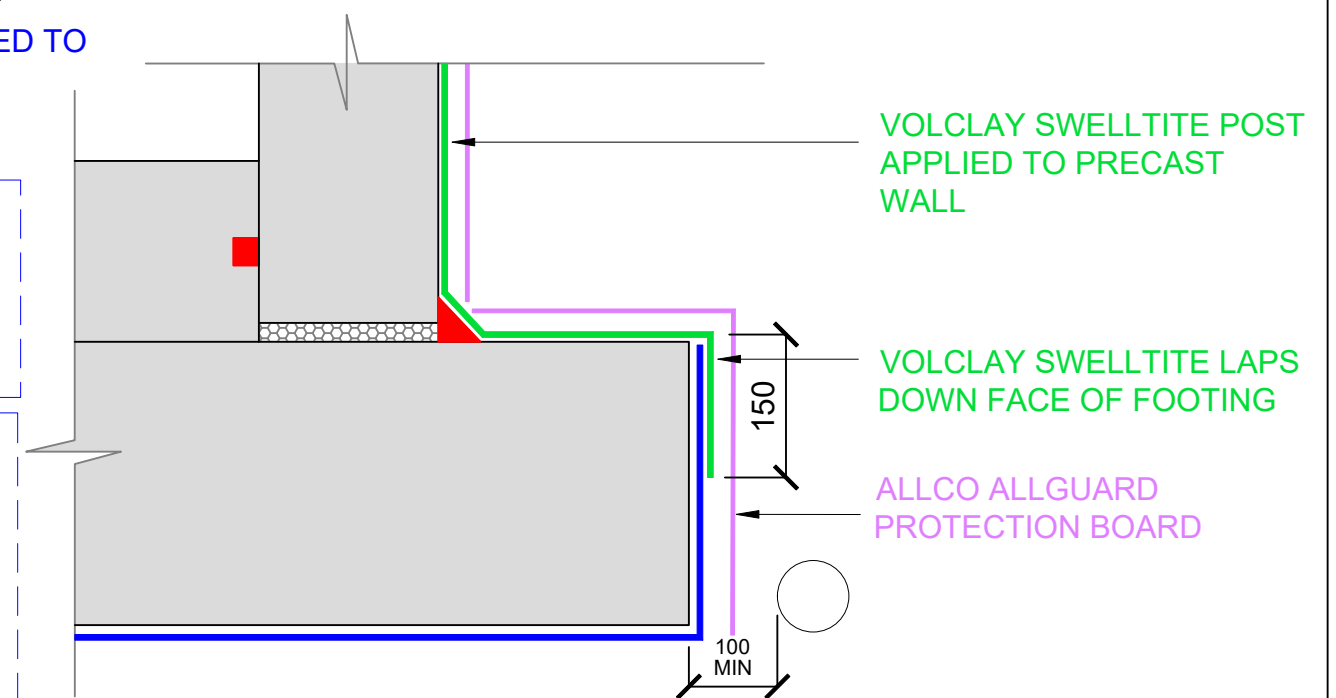
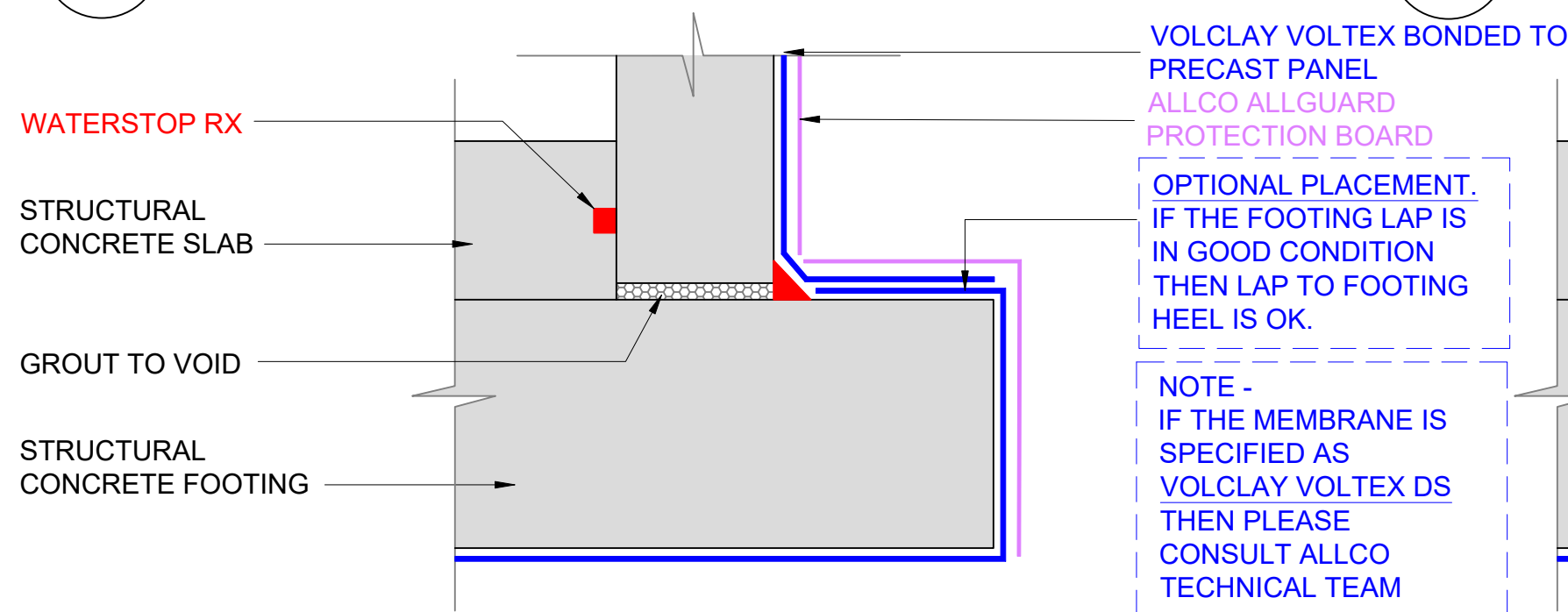


1 HEEL FOOTING / WALL - BONDED VOLTEX TO PC PANEL  
SCALE: NTS

2 HEEL FOOTING / WALL - SWELLTITE TO PC PANEL  
SCALE: NTS



1A HEEL FOOTING / WALL - BONDED VOLTEX TO PC PANEL  
SCALE: NTS  
LAP OPTION

3 HEEL FOOTING / WALL - SWELLTITE TO PC PANEL  
SCALE: NTS  
LAP OPTION



The information and data contained herein are believed to be accurate and reliable.  
This information does not constitute a warranty and should be used in conjunction with the project specification document supplied by Allco Waterproofing Solutions Ltd  
Please contact Allco Waterproofing Solutions Ltd with any questions or deviations from this information.  
If variances to published CETCO documentation occur, ALLCO detailing takes precedent  
© Allco Waterproofing Solution Ltd

For Technical Advice Contact:  
Web: [www.allco.co.nz](http://www.allco.co.nz)  
Email: [info@allco.co.nz](mailto:info@allco.co.nz)  
Telephone: 09 448 1185  
Facsimile: 09 448 1186



DRAWN BY: ALLCO	DATE: 06/23
DRAWING REF: V-F-05B	REV: 4