

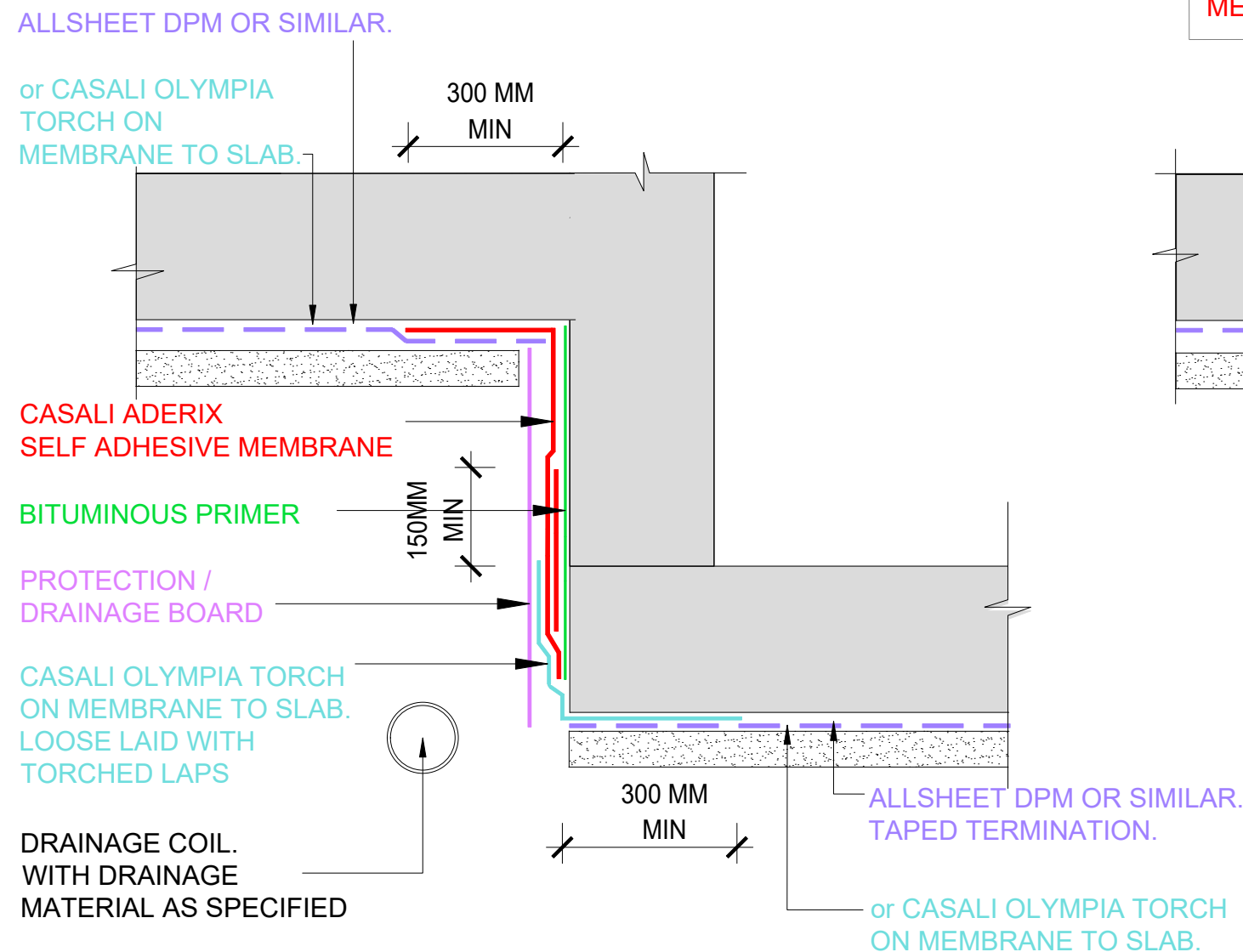
3

### ALTERNATE WALL TERMINATION

SCALE: NTS

#### NOTE - WALL MEMBRANE OPTIONS:

CASALI OLYMPIA MEMBRANE CAN BE SUBSTITUTED FOR CASALI ADERIX MEMBRANE.



1

### RETAINING WALL / FLUSH FOOTING JUNCTION - MULTILEVEL

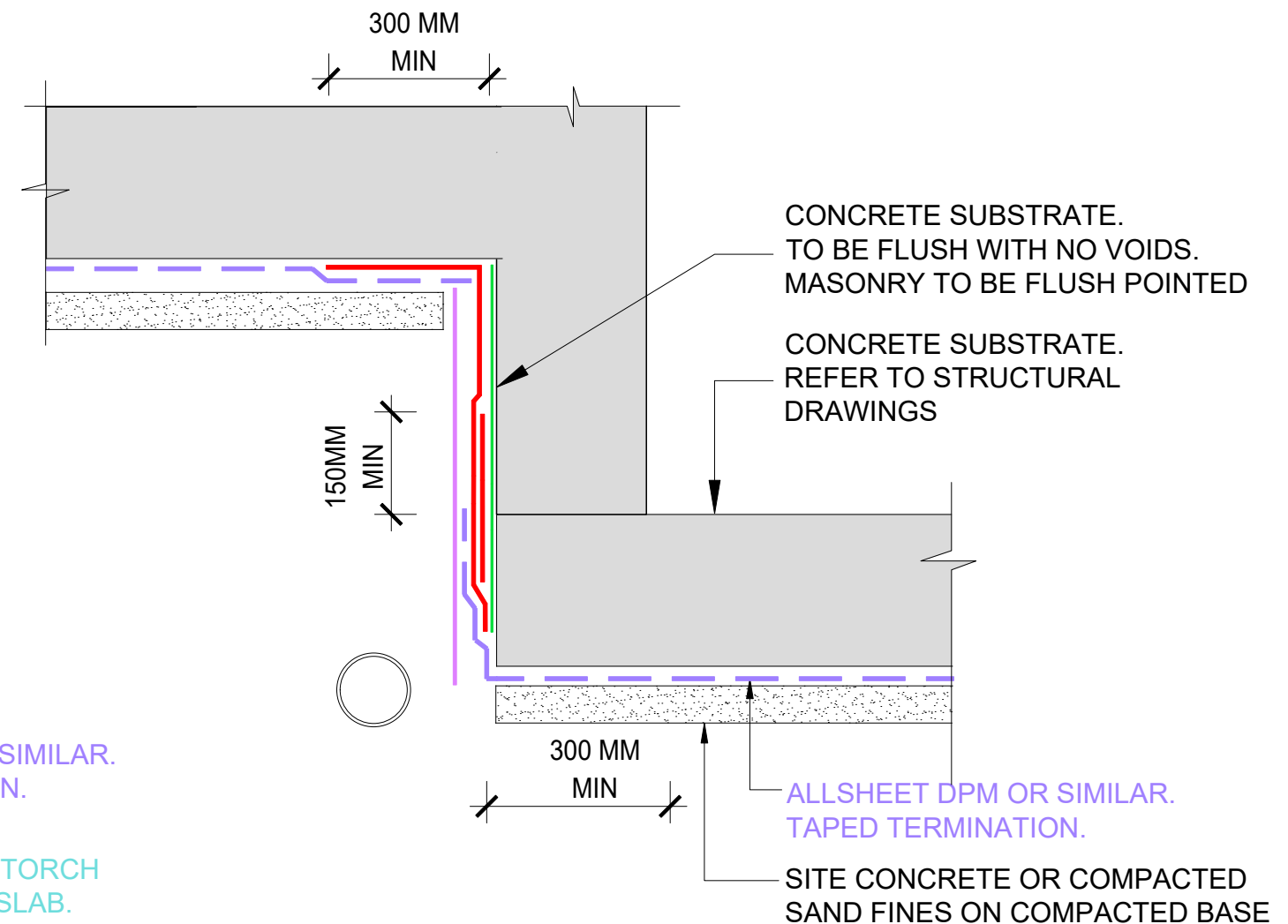
SCALE: NTS

2

### RETAINING WALL / FLUSH FOOTING JUNCTION - MULTILEVEL

SCALE: NTS

DPM TO FOOTING AND SLAB



The information and data contained herein are believed to be accurate and reliable. This information does not constitute a warranty and should be used in conjunction with the project specification document supplied by Allco Waterproofing Solutions Ltd. Please contact Allco Waterproofing Solutions Ltd with any questions or deviations from this information.  
© Allco Waterproofing Solution Ltd

For Technical Advice Contact:  
Web: [www.allco.co.nz](http://www.allco.co.nz)  
Email: [info@allco.co.nz](mailto:info@allco.co.nz)  
Telephone: 09 448 1185  
Facsimile: 09 448 1186



DRAWN BY:  
ALLCO

DATE:  
07/2023

DRAWING REF:  
CA-PS-03

REV:  
2