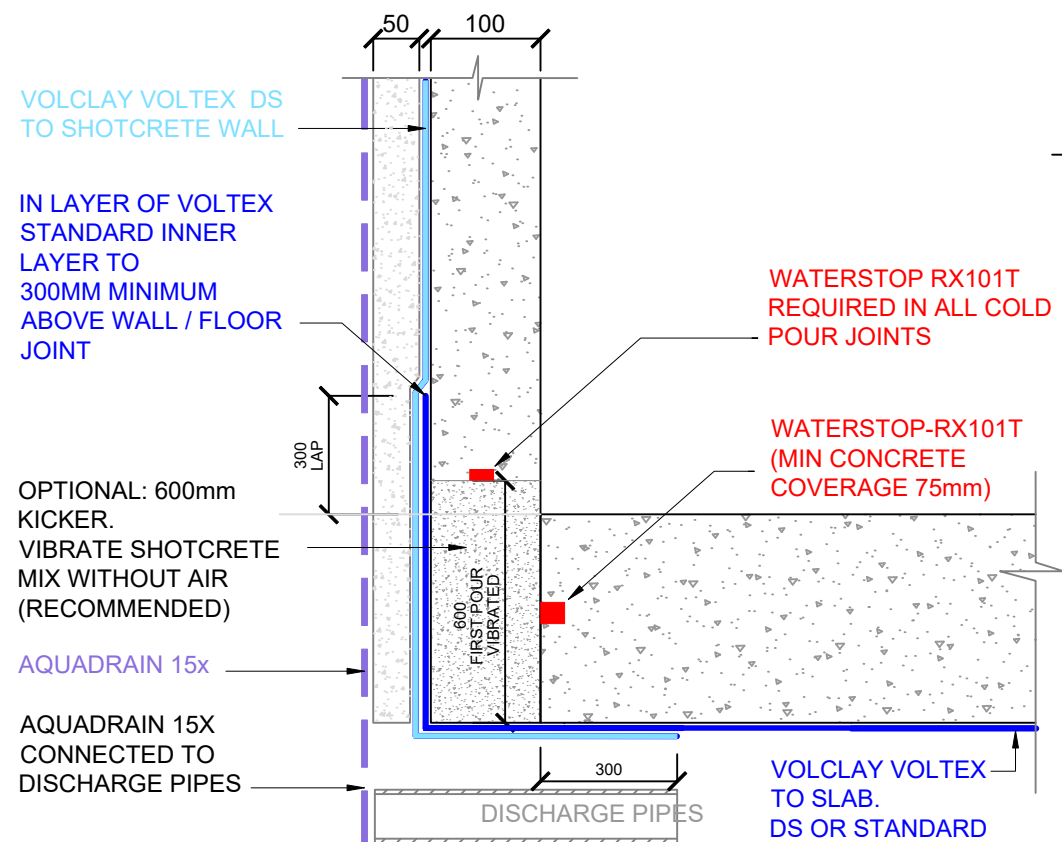
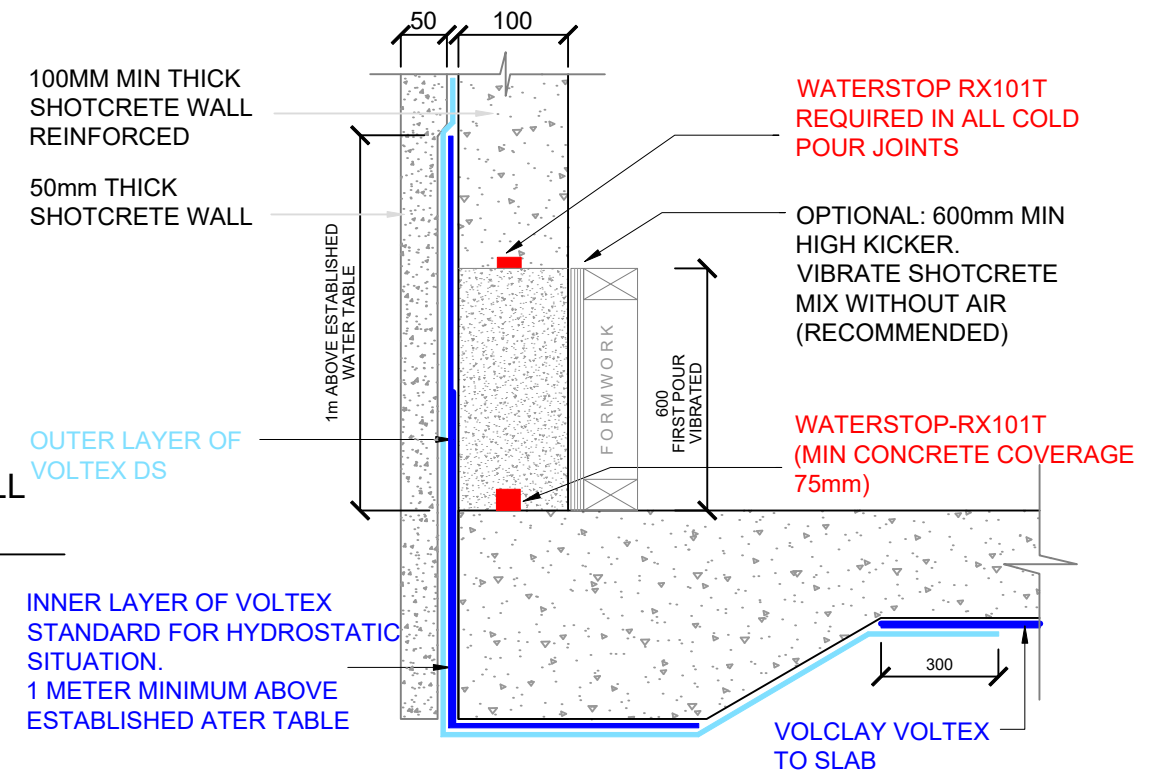


SHOTCRETE WALL FOOTING DETAIL

SCALE: NTS
(NON HYDROSTATIC)

SHOTCRETE WALL FOOTING DETAIL

SCALE: NTS
(HYDROSTATIC)

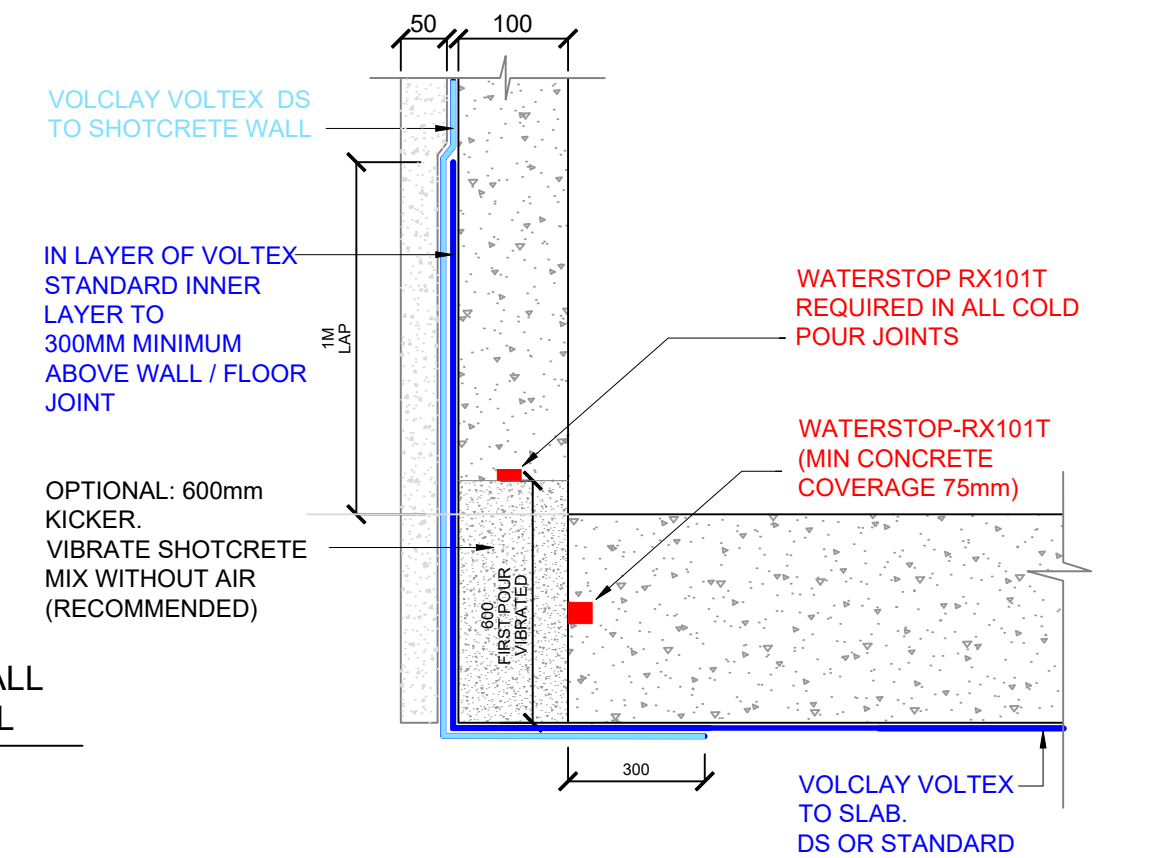


SHOTCRETE WALL FOOTING DETAIL

SCALE: NTS
(NON HYDROSTATIC)

SHOTCRETE WALL FOOTING DETAIL

SCALE: NTS
(HYDROSTATIC)



The information and data contained herein are believed to be accurate and reliable.
This information does not constitute a warranty and should be used in conjunction with the project specification document supplied by Allco Waterproofing Solutions Ltd
Please contact Allco Waterproofing Solutions Ltd with any questions or deviations from this information.
© Allco Waterproofing Solution Ltd

For Technical Advice Contact:
Web: www.allco.co.nz
Email: info@allco.co.nz
Telephone: 09 448 1185
Facsimile: 09 448 1186



DRAWN BY: ALLCO	DATE: 05/19
DRAWING REF: V-W-12	REV: 4