

CENTRAMENT PROOF 10

CRYSTALLINE ADMIXTURE.
WATERPROOFING FROM THE INSIDE.

MAY
26

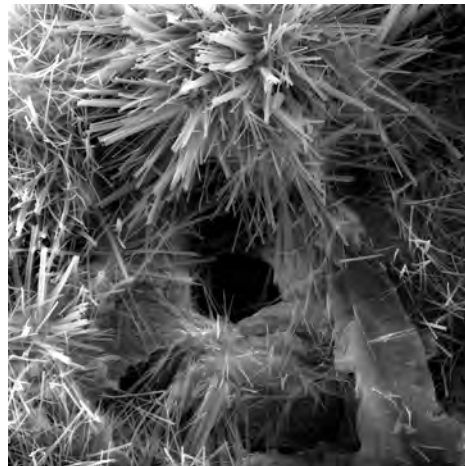
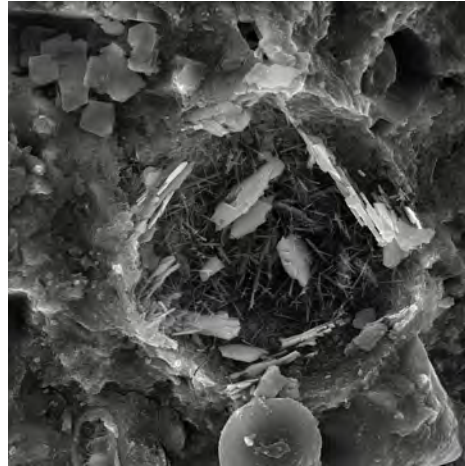
UNDERSTANDING CONCRETE

Concrete is naturally porous and permeable, making it vulnerable to cracking, water ingress, deterioration, and corrosion of reinforcement. CP 10 Crystalline Admixture eliminates these issues in one simple and cost effective step.

HOW DOES CENTRAMENT PROOF 10 WORK?

Through crystalline technology, CP 10 reduces concrete permeability by filling pores and capillaries and supporting the self-healing of fine cracks, effectively preventing water ingress and enhancing long-term durability.

CP 10 is added directly during concrete mixing, integrating seamlessly into the mix. This saves time and labour, while ensuring protection begins as soon as the concrete cures; actively working to block capillaries and microcracks, preventing water from passing through.



Crystals growth in the pores of the cement stone.



THE EFFECTS OF WATERPROOFING ADMIXTURES

Crystalline waterproofing admixtures have two types of waterproofing effect: immediate and delayed.

IMMEDIATE - A portion of the admixture reacts with water and cement hydration products during the setting and hardening stages, forming crystals that seal early porosity and micro-cracks.

DELAYED - The unreacted portion of the admixture remains dormant until it comes into contact with water (e.g., leaks through a newly formed micro-crack) and begins to form crystals, accelerating self-healing. In this way, waterproofing admixtures provide both immediate and continuous waterproofing protection.

CP 10 PROPERTIES

- ✓ Powdered admixture
- ✓ Crystalline waterproofing
- ✓ Interrupts capillaries and fills pores
- ✓ Highly effective against pressurised water
- ✓ Heals cracks up to 0.4mm
- ✓ Prolongs the life of concrete



APPLICATIONS

- Foundations, basements and underground structures, especially under hydrostatic conditions.
- Bridges, tunnels and marine structures exposed to harsh weather conditions or saltwater corrosion.
- Roofs, balconies and terraces to prevent rainwater infiltration and seepage.

BENEFITS

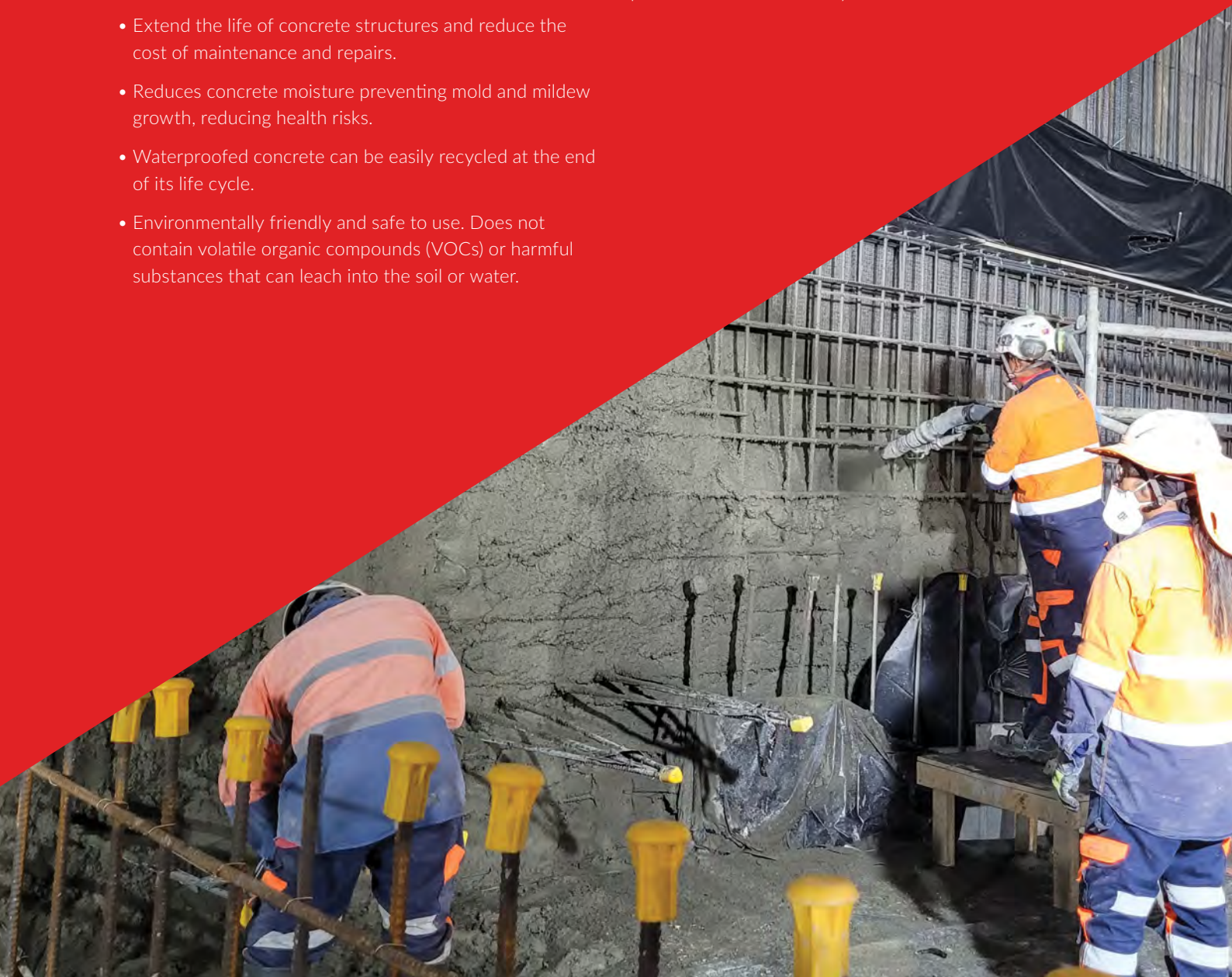
- Providing permanent and integral waterproofing protection.
- Improving concrete durability by reducing porosity, permeability and other water-related damage.
- Extend the life of concrete structures and reduce the cost of maintenance and repairs.
- Reduces concrete moisture preventing mold and mildew growth, reducing health risks.
- Waterproofed concrete can be easily recycled at the end of its life cycle.
- Environmentally friendly and safe to use. Does not contain volatile organic compounds (VOCs) or harmful substances that can leach into the soil or water.

TYPE B PROTECTION - INTEGRAL WATERPROOFING

Type B waterproofing relies on the concrete structure itself to resist water ingress. CP 10 works within the concrete's pore system, blocking water pathways, preventing lateral tracking, while allowing clear identification of any potential leak source.

By turning the concrete into a watertight barrier from within, CP 10 delivers Type B – Structurally Integral Protection in accordance with BS 8102:2022.

When combined with Allco's Type A barrier systems (membranes), CP 10 forms a robust dual waterproofing solution. This Type A + Type B approach significantly reduces the risk of water ingress and is often essential for habitable basements and high-risk environments where performance and reliability are critical.



ENGINEERED FOR DURABILITY IN DEMANDING ENVIRONMENTS

Infrastructure structures are constantly exposed to water, hydrostatic pressure, and aggressive environmental conditions. From tunnels and basements to water-retaining structures and sewer systems, long-term performance is critical.

CP 10 provides integral waterproofing by working within the concrete itself, reducing permeability, limiting water ingress, and protecting against deterioration over time. This makes it an ideal solution for infrastructure projects where reliability, longevity, and reduced maintenance are essential.

INFRASTRUCTURE APPLICATION

- Tunnels and underground structures
- Water treatment plants, reservoirs, and tanks
- Foundations and deep basements
- Manholes, shafts, and sewer systems
- Dams and civil structures exposed to continuous water pressure.

If you would like to learn more or require assistance with design, specification or compliance, please speak with your Allico Account Manager today on (09) 448 1185 or email tech@allico.co.nz





3 Te Kea Place, Albany, Auckland
09 448 1185 www.allco.co.nz

