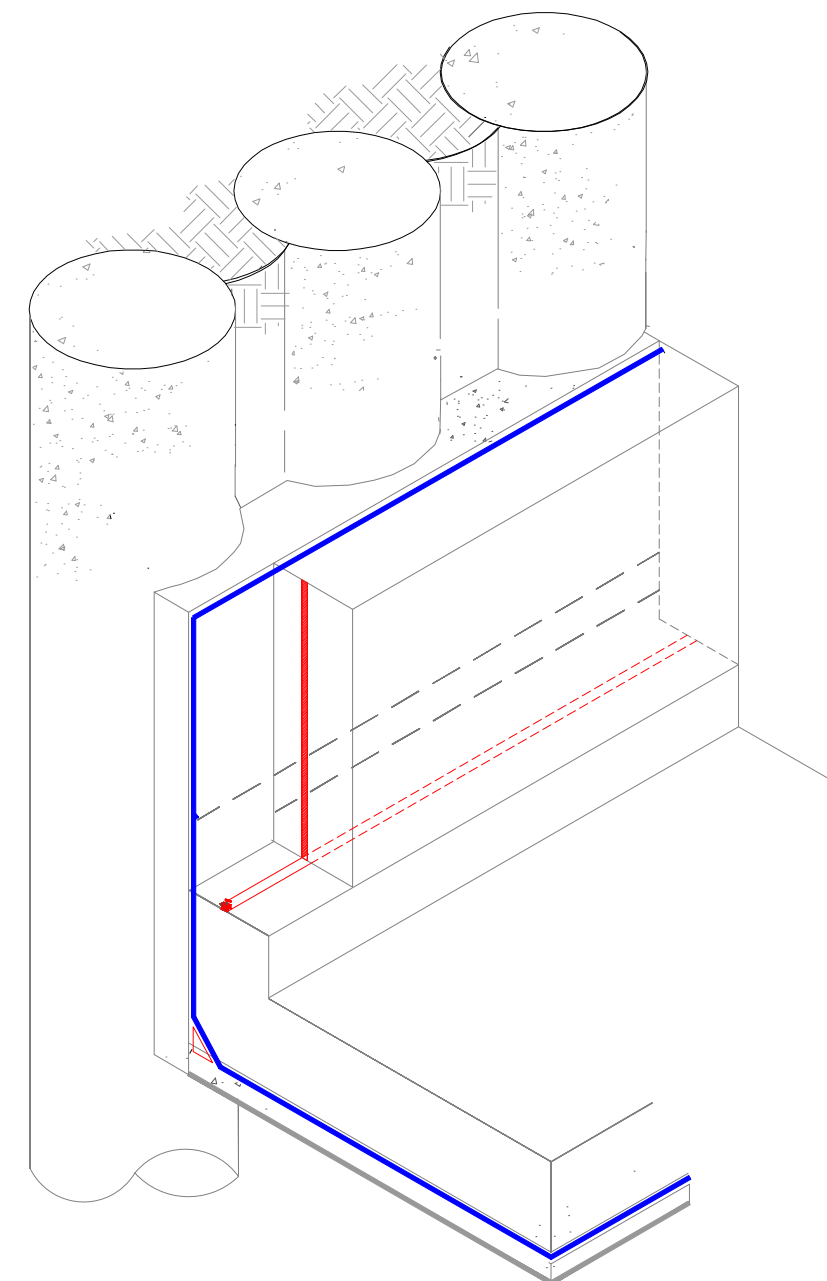


REINFORCED SHOTCRETE
CONCRETE WALL IN
BETWEEN PILES TO
ENGINEERS DESIGN AND
DOCUMENTATION

VOLCLAY VOLTEX TO FACE
OF SHOTCRETE WALL

VOLCLAY WATERSTOP RX
TO COLD POUR JOINT AT
BASE OF WALL.
SEE DETAIL V-W-12



1

SHOTCRETE WALL - BASEMENT WALL

SCALE: NTS



The information and data contained herein are believed to be accurate and reliable.
This information does not constitute a warranty and should be used in conjunction with the
project specification document supplied by Allco Waterproofing Solutions Ltd
Please contact Allco Waterproofing Solutions Ltd with any questions or deviations from
this information.
© Allco Waterproofing Solution Ltd

For Technical Advice Contact:
Web: www.allco.co.nz
Email: info@allco.co.nz
Telephone: 09 448 1185
Facsimile: 09 448 1186



DRAWN BY:
ALLCO

DATE:
05/19

DRAWING REF:
V-W-11B

REV:
1