

VOLCLAY VOLTEX.  
STRIP OVER JOINT

VOLCLAY VOLTEX BONDED  
TO PRECAST PANEL

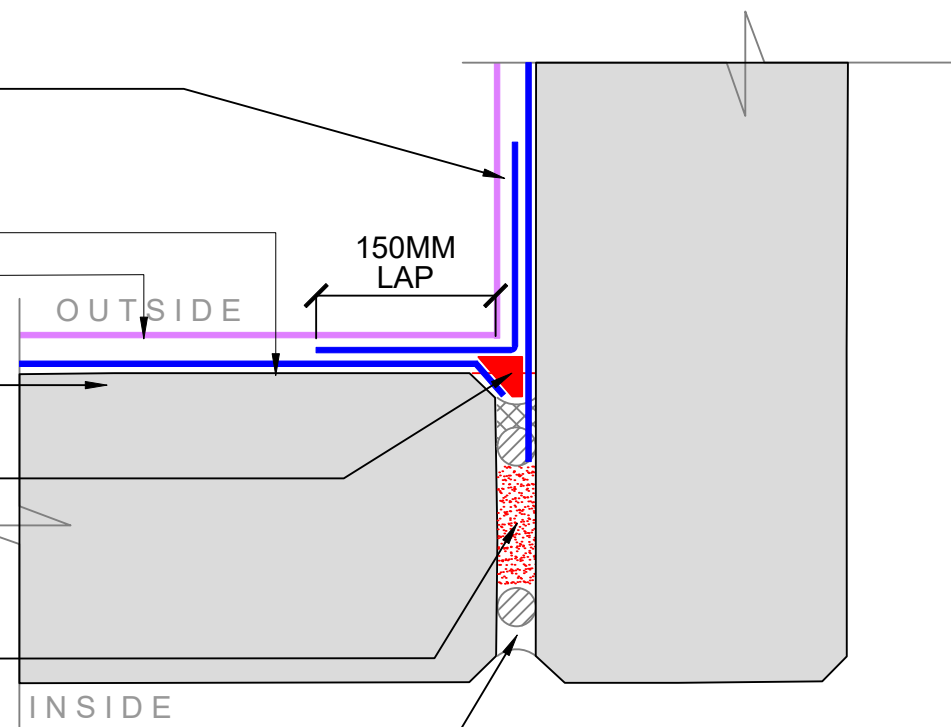
ALLCO ALLGUARD  
PROTECTION BOARD

PRECAST  
CONCRETE WALL

WATERSTOPPAGE /  
BENTOSEAL OVER  
PEF ROD

WATERSTOPPAGE TO  
VOID 300mm ABOVE  
F.G.L WITH SEALANT TO  
TOP LEDGE

SEALANT ON  
PEF ROD



1 PRECAST WALL - INTERNAL CORNER  
SCALE: NTS VOLTEX

VOLCLAY SWELLTITE.  
STRIP OVER JOINT

ALLCO ALLGUARD  
PROTECTION BOARD

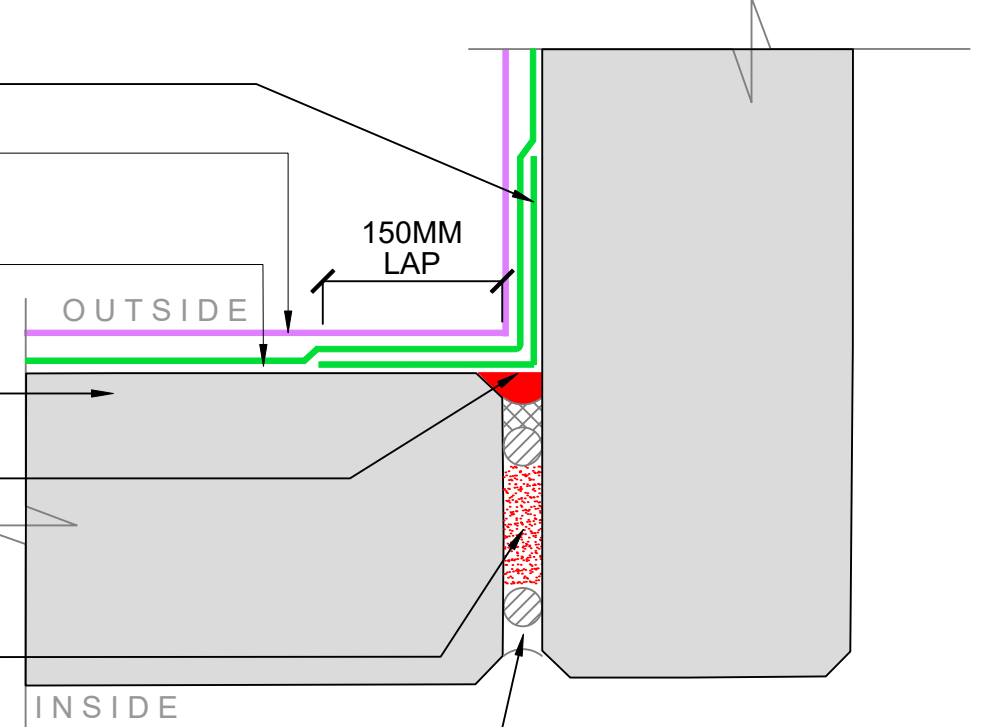
VOLCLAY SWELLTITE.  
POST APPLIED TO  
PRECAST WALL PANEL

PRECAST  
CONCRETE WALL

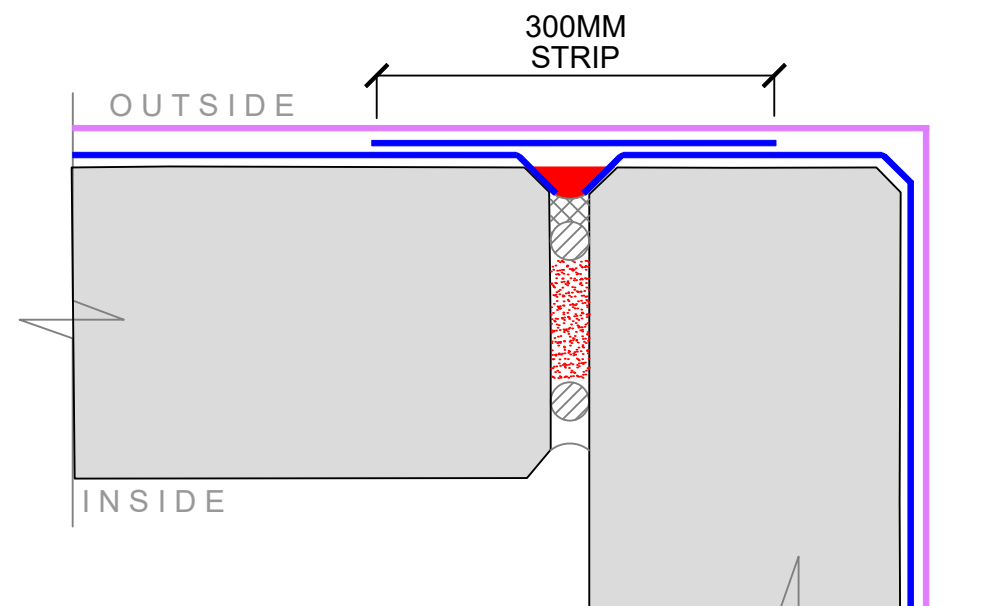
WATERSTOPPAGE /  
BENTOSEAL OVER  
PEF ROD

WATERSTOPPAGE TO  
VOID 300mm ABOVE  
F.G.L WITH SEALANT TO  
TOP LEDGE

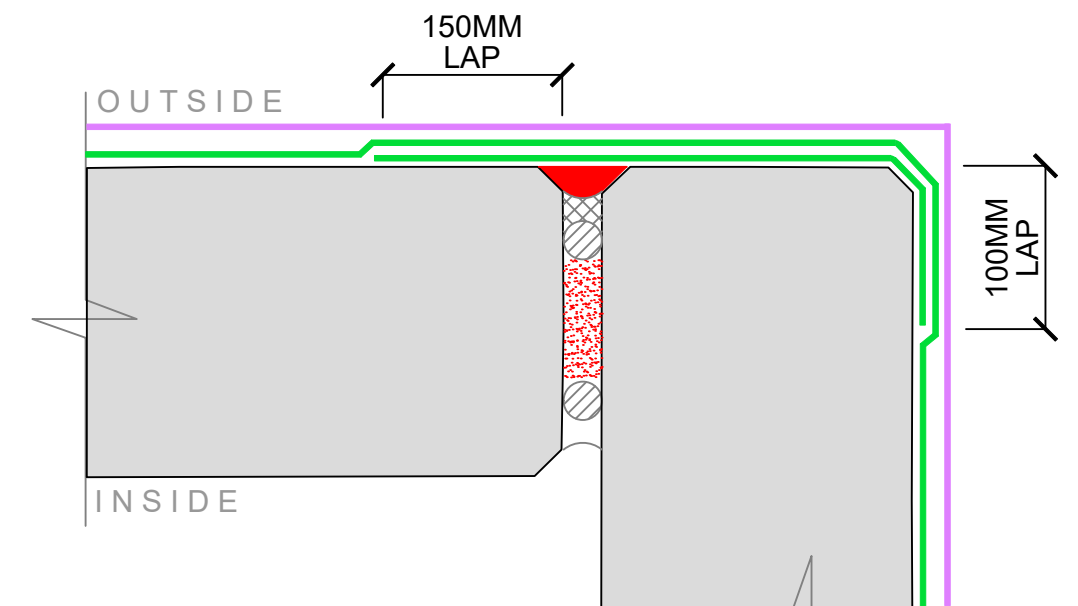
SEALANT ON  
PEF ROD



2 PRECAST WALL - INTERNAL CORNER  
SCALE: NTS SWELLTITE



1A PRECAST WALL - EXTERNAL CORNER  
SCALE: NTS VOLTEX



2A PRECAST WALL - EXTERNAL CORNER  
SCALE: NTS SWELLTITE



The information and data contained herein are believed to be accurate and reliable.  
This information does not constitute a warranty and should be used in conjunction with the  
project specification document supplied by Allco Waterproofing Solutions Ltd  
Please contact Allco Waterproofing Solutions Ltd with any questions or deviations from  
this information.  
© Allco Waterproofing Solution Ltd

For Technical Advice Contact:  
Web: [www.allco.co.nz](http://www.allco.co.nz)  
Email: [info@allco.co.nz](mailto:info@allco.co.nz)  
Telephone: 09 448 1185  
Facsimile: 09 448 1186



DRAWN BY: ALLCO	DATE: 05/19
DRAWING REF: V-W-04A	REV: 1