

## Volclay<sup>®</sup>, the only BRANZ Appraised Bentonite System in New Zealand



## VOLCLAY<sup>®</sup> TANKING + WATERPROOFING

- Can be applied in virtually ANY weather
- Self healing - can cope with ponded water
- Needle punched - will not slump or delaminate like 'other' Bentonite systems
- Contaminant-resistant Voltex<sup>®</sup> DS/SWR (Salt Water Resistant) & Ultraseal<sup>®</sup>

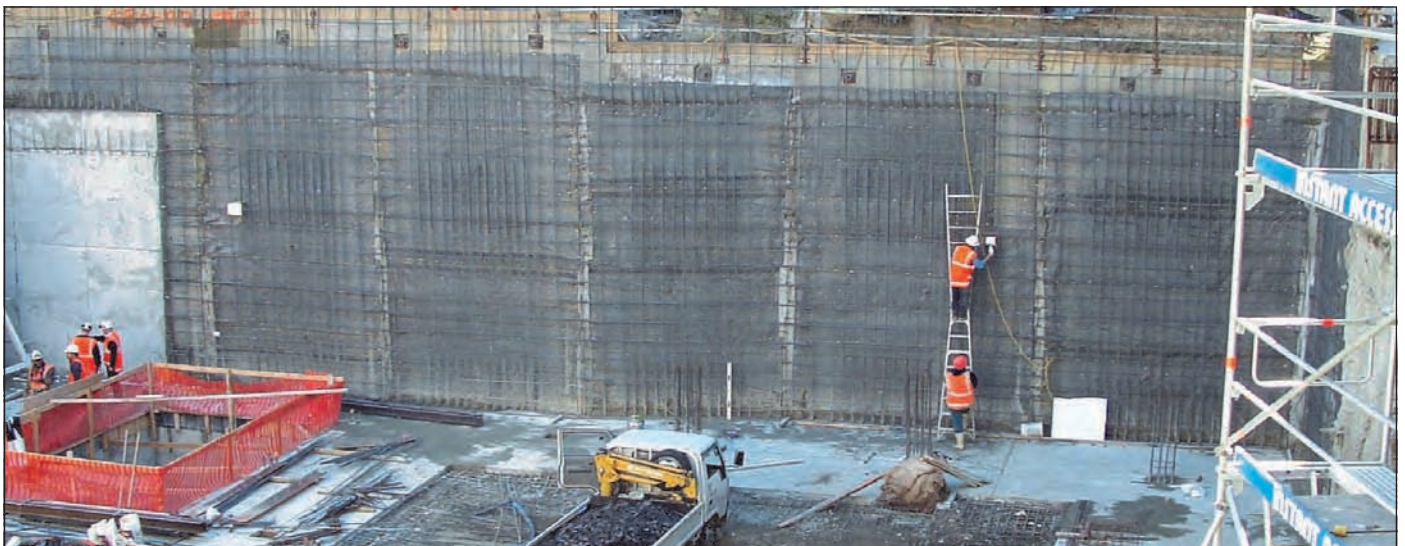
# VOLCLAY® WATERPROOFING

*Protecting our heritage*



Auckland War Memorial Museum, Domain Drive, Parnell, Auckland  
Architect - Peddle Thorpe & Aitkin Ltd | Contractor - Hawkins Construction Ltd | Applicator - Sansom Contract Services Ltd

When it comes to the Nation's heritage, there can be no compromise. That's why Volclay® was chosen to provide the waterproofing at the Auckland War Memorial Museum's Atrium development. The \$55 million plus exhibition halls currently under construction in the hole excavated from the middle of the existing museum covers 2 basement areas for storage and display preparation and two above ground levels, including a mezzanine. Over 2000 square meters of Volclay Voltex® was used to fully tank the basement slab, lift pits and basement shotcrete walls. Those on site were very impressed with the durability of Volclay®. Quality assurance was provided by the applicator, Sansom Contract Services Ltd with independent inspection provided by Allco Agencies Ltd.



**Question:**



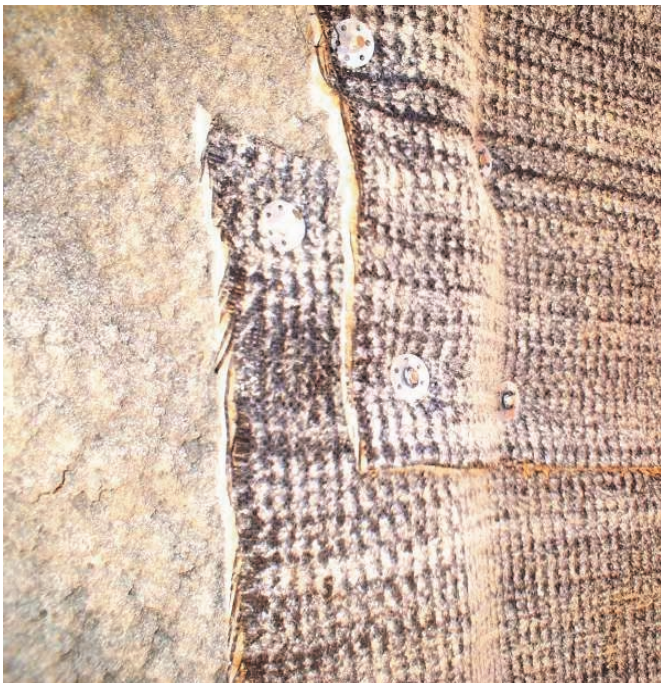
What do you do when the weather won't let you apply your waterproofing?

**Answer:**

**GET A MORE WEATHER FRIENDLY WATERPROOFING PRODUCT!  
VOLCLAY® WATERPROOFING CAN BE APPLIED IN MOST  
WEATHER CONDITIONS AND THE SHOW CAN GO ON**



▲ **Application of Volclay® at the Auckland War Memorial Museum**  
 With the use of modern fastening techniques, installation of the membrane is quick and straight forward in any weather condition.

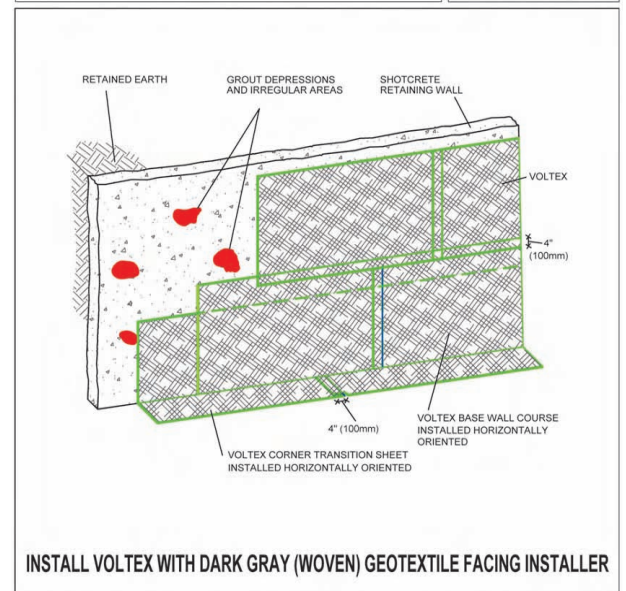
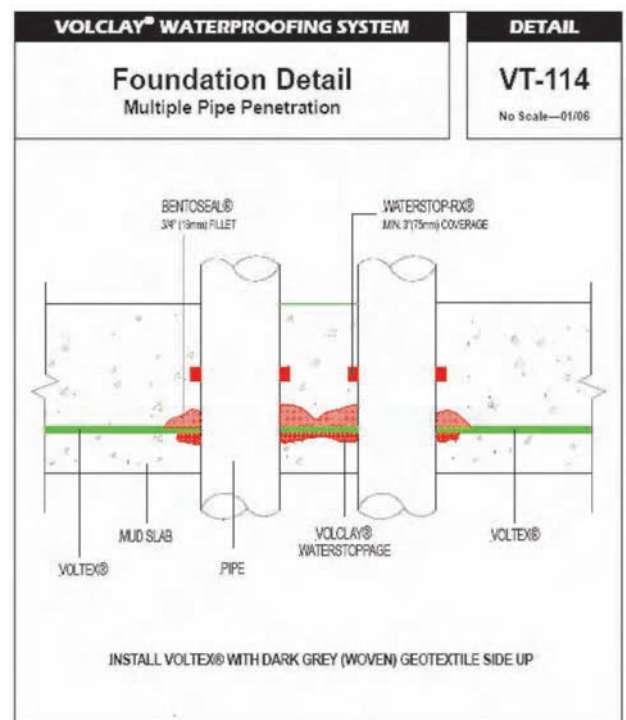


▲ **An example of a Quality Assurance photo**  
 Taken at the Auckland War Memorial Museum this shows the correct installation and lapping of the Volclay Voltex® membrane to the concrete substrate.

Once the Volclay Voltex® was installed at the Auckland War Memorial Museum, any delays in further construction did not affect the waterproofing qualities despite inclement weather. This was due to the unique needle-punched structure of the membrane which prevents the bentonite from delaminating or over-hydrating. In effect, the product cannot slump or sag with gravity and will not delaminate when walked on by construction traffic as inferior bentonite systems are prone to do. One of the challenges of this project, was the numerous pipe penetrations for drainage and services. In this case the flexible nature of the Volclay Voltex® was an asset and used in conjunction with the other Volclay® accessories, provided a single source waterproofing solution.



▲ Numerous pipe penetrations, for drainage and services are detailed with Volclay® Waterstoppage (granular bentonite). Bentoseal® and Waterstop-Rx® were used on larger penetrations.



# WHEN A WHOLE LOT DEPENDS ON A RELIABLE SEAL . . . SPECIFY VOLCLAY® WATERPROOFING



FOR OVER 40 YEARS, DESIGN PROFESSIONALS AND CONTRACTORS ALIKE HAVE DEPENDED ON VOLCLAY® FOR COST-EFFECTIVE AND RELIABLE WATERPROOFING PROTECTION. TODAY ALLCO AGENCIES OFFER TWO MORE ADVANCED WATERPROOFING TECHNOLOGIES - VOLCLAY ULTRASEAL® BENTONITE-POLYMER ALLOY AND VOLCLAY SWELLTITE®.

- WATERPROOFING SOLUTIONS
- CONCRETE JOINT WATERSTOPS
- REMEDIAL INJECTION LIFTPITS & BASEMENTS

SPECIALISED SYSTEMS FOR BLIND SIDE CONSTRUCTION INCLUDING PRECAST PANELS, SHOTCRETE WALLS, UNDER-SLABS, BACKFILLED FOUNDATION WALLS AND PLAZA DECKS.



MasterSpec®

Reference 4131V



- Approved Applicators
- On Site Quality Assurance
- Independent Inspection Available

Information compiled by  
**Peter Stevens,**  
Volclay Product Manager

Member of The Construction  
Specifications Institute

For further project  
& specification  
information contact:

[peter@allco.co.nz](mailto:peter@allco.co.nz)  
0275-420-225



5 Airborne Road, Albany, Auckland | PO Box 101903, North Shore City 0745  
Ph 09 448 1185 | Fax 09 448 1186 | [info@allco.co.nz](mailto:info@allco.co.nz) | [www.allco.co.nz](http://www.allco.co.nz)