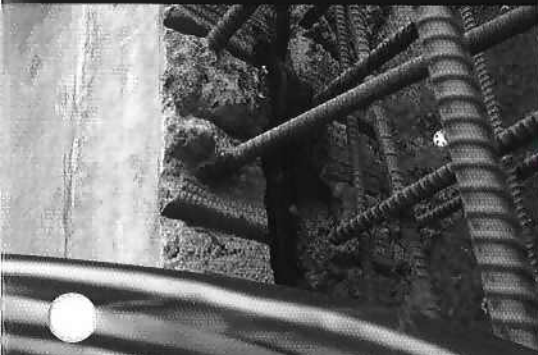


VOLCLAY

WATER STOP-RX[®]

EXPANDING CONCRETE JOINT WATERSTOP

Wall



Slab



Penetration



CETCO[®]
BUILDING MATERIALS GROUP

WATERSTOP-RX® is an expanding strip waterstop designed to stop water infiltration through cast-in-place concrete construction joints. It expands upon contact with water to form a positive seal against the concrete. The key to WATERSTOP-RX's effectiveness is high sodium bentonite content which provides superior expansion to seal and fill voids and cracks in the concrete. WATERSTOP-RX is designed to replace passive PVC/Rubber dumbbell waterstops, thereby eliminating the requirement of special pieces, split-forming and seam welding. Specified worldwide, WATERSTOP-RX has a 25-year proven track record as a reliable and cost-effective solution for stopping water ingress through concrete joints.

WATERSTOP-RX is manufactured in light-weight, flexible coils that are easily installed by a single worker. The product is adhered to concrete, steel, and PVC (pipes) with Volclay WB-Adhesive at or exceeding the required minimum distance from the exterior concrete surface. Coil ends are butted together – not overlapped – to form a continuous waterstop.

WATERSTOP-RX has been successfully tested by independent testing firms to over 200 feet (60 meters) of hydrostatic water pressure, under both continuous immersion and wet/dry cycling. WATERSTOP-RX is certified by NSF International to conform to the requirements of NSF Standard 61 - Drinking Water System Components - Health Effects.

WATERSTOP-RX is available in three sizes and shapes (see Product Table on back page). WATERSTOP-RX 101 is produced in a rectangular shape measuring 1" x 3/4" (25 x 19mm). WATERSTOP-RX 101T is produced in a trapezoidal shape measuring 1-1/4" x 1/2" (31 x 12mm) with a reinforcing plastic scrim embedded in the top surface for high tensile strength. The patented trapezoidal shape distributes the expansive force over a greater area and allows the concrete to flow more readily over the product during placement. WATERSTOP-RX 102 is produced in a half-circle (Crescent) shape measuring 3/4" x 3/8" (19 x 9mm).



RX101



RX101T



RX102

WATERSTOP-RX ADVANTAGES:

- Active, Swelling Waterstop
- Fast, Easy Installation
- Seals Around Penetrations
- Ideal when pouring against existing concrete
- Expands to seal off leaks
- High Hydrostatic Resistance

APPLICATIONS

Applications include both vertical and horizontal non-moving concrete construction joints, new to existing concrete construction, irregular surfaces, and around through-wall penetrations, such as plumbing and utility pipes. Additionally it can seal around concrete pilings and steel I-beams passing through the concrete. WATERSTOP-RX works in both continuous hydrostatic and intermittent hydrostatic conditions.

WATERSTOP-RX is certified by NSF International for use in potable water tanks 1,000 gallons (3,785 l) or greater.



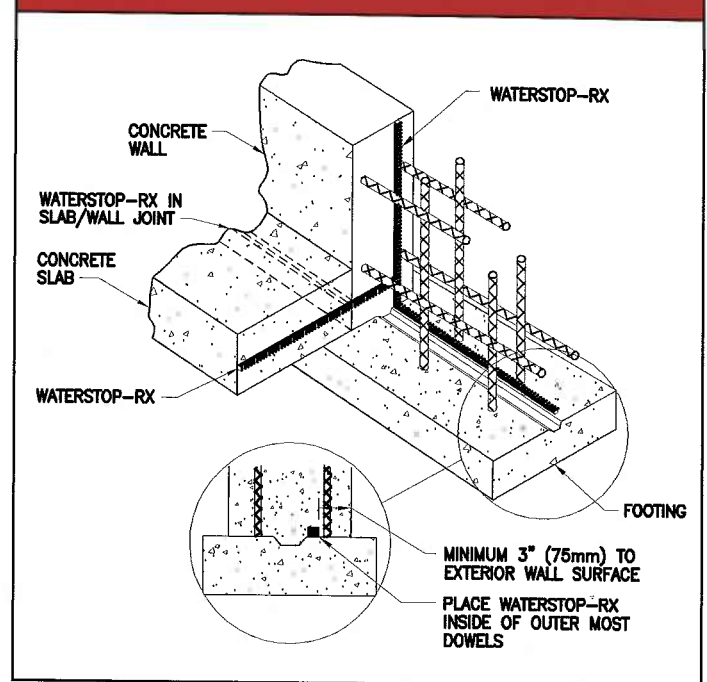
Certified to
ANSI / NSF 61

WATERSTOP-RX products are designed for reinforced structural concrete with a minimum of 3,000 psi compressive strength. RX-101 and RX-101T products are designed for concrete 8" (200mm) thick or greater with two rows of reinforcing steel. RX-102 products are designed for vertical concrete 5" (125mm) thick or greater; and horizontal concrete no less than 4" (100mm) thick. RX-102 products should be used in concrete with one row of steel reinforcement, concrete curbs, planter walls, fountains, and lightweight structural concrete.

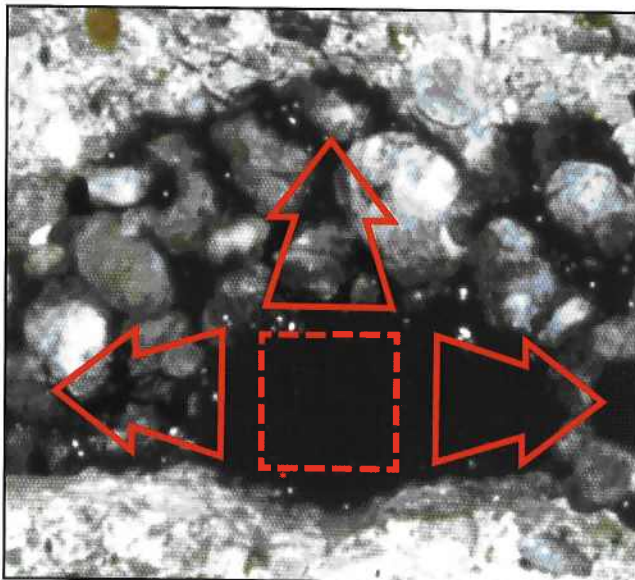
WATERSTOP-RX

is an effective, simple and economical material for cast-in-place concrete joints.

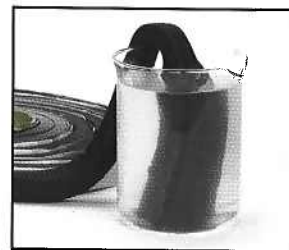
GENERAL APPLICATION DETAIL



WATERSTOP-RX should only be used in applications where the product is completely encapsulated within the concrete at or exceeding 3" (75 mm) from the exterior concrete surface (2" (50 mm) for RX102). WATERSTOP-RX is not designed nor intended to function as an expansion joint sealant.



In poorly consolidated concrete, WATERSTOP-RX can expand to fill voids, stopping water ingress through the concrete joint.



When hydrated, WATERSTOP-RX can expand up to three times its size in an unconfined area but is limited to controlled expansion in a concrete joint where it is confined.



Unlike PVC waterstops, WATERSTOP-RX can easily be installed around irregular structural elements.

