

# VOLCLAY TB-BOOT™

## FLEXIBLE EPDM TIE-BACK HEAD COVER

### DESCRIPTION

Volclay TB-Boot™ is a flexible, preformed EPDM boot used primarily to detail tie-back heads on soldier pile and lagging shoring walls. The flexible cone shape can be adjusted to a shallow depth for short tie-back heads or installed to its full height coverage when required.

### TYPICAL APPLICATIONS

Volclay TB-Boot is designed for typical tie-back heads ranging up to 6" (150 mm) in diameter. For covering larger tie-back heads, CETCO recommends the use of field fabricated metal sheet boxes (minimum 26 gauge galvanized steel) filled with a 50/50 mix of Bentoseal and Waterstoppage (premium granular sodium bentonite). Contact a CETCO Building Materials Representative for additional application recommendations.

### INSTALLATION

Volclay TB-Boot should be applied in accordance with the manufacturer's guidelines. Prior to installing each TB-Boot fill any void areas behind the tie-back head with cementitious grout or compacted soil. Fill the boot cavity with a 50/50 mix of Bentoseal and Waterstoppage (premium granular sodium bentonite). Then place boot into position over tie-back head and secure with several mechanical fasteners through the boot's perimeter flange. Overlap the secured boot flange with the Volclay waterproofing membrane and then apply Bentoseal around the base of the boot at the membrane edge.

### PACKAGING AND STORAGE

Volclay TB-Boot is available in boxes containing ten (10) boots each. All materials should remain in the original containers until ready to be applied.

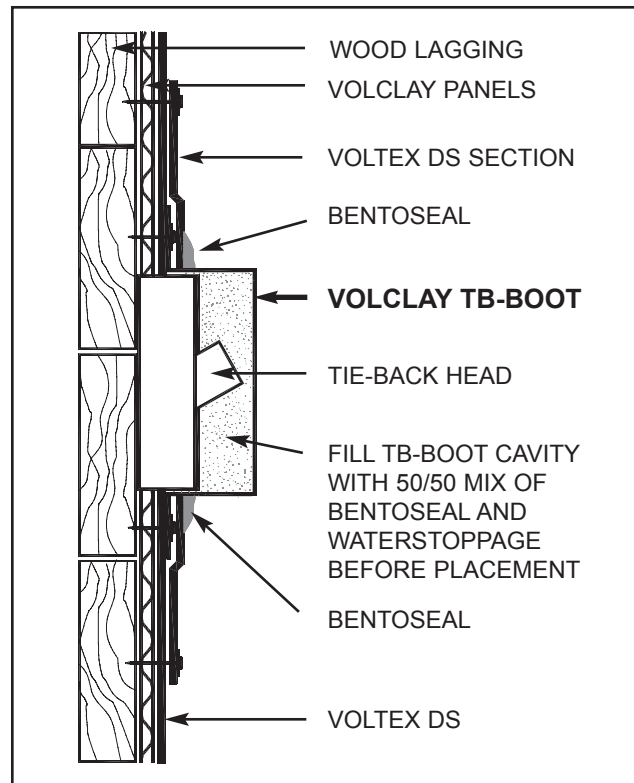


1500 West Shure Drive  
Arlington Heights, IL 60004  
tel (800) 527-9948 fax(847)506-6195  
www.cetco.com

The information contain herein supersedes all previous versions printed, and is believed to be accurate and reliable. CETCO provides this information for the uses review and verification. CETCO makes no warranty of any kind and accepts no responsibility for the results obtained through application of this information. CETCO reserves the right to update information without notice.



Volclay TB-Boot installed over soldier pile tie-back head with Bentoseal applied around the base perimeter of the boot and onto the Voltex DS membrane.



Install Volclay TB-Boot preformed EPDM cover over tie-back heads. Prior to installing, fill cavity of TB-Boot with a 50/50 mix of Bentoseal and Waterstoppage (premium granular sodium bentonite).

**JUNE 2004 (Supersedes All Previous Versions)**