

VOLCLAY® WATERPROOFING SYSTEM

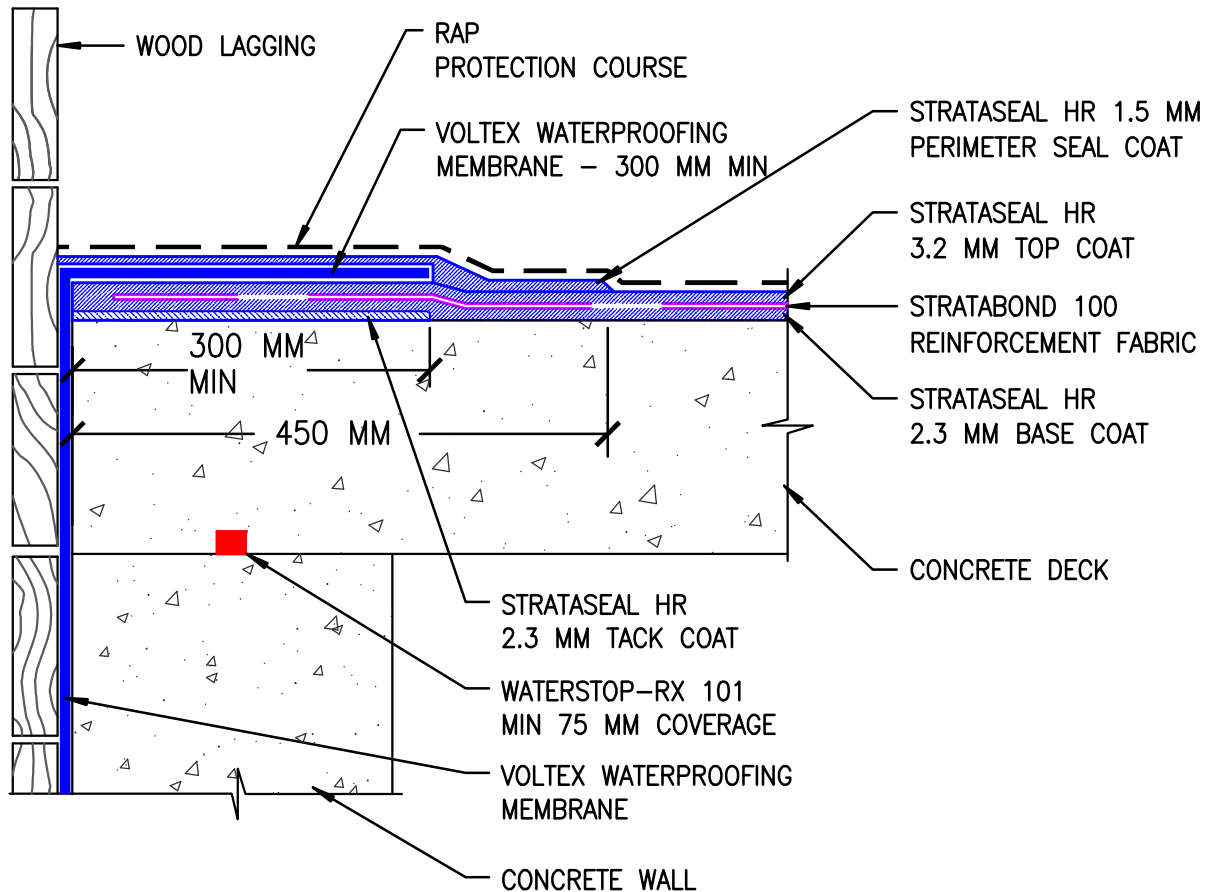
DETAIL

CONCRETE DECK

Transition from Property Line Wall with Voltex

HR-421

No Scale - 07/06



NOTE: APPLY VOLTEX WATERPROOFING MEMBRANE INTO TOP COAT OF STRATASEAL HR WHILE STRATASEAL IS STILL WARM AND TACKY.



The information and data contained herein are believed to be accurate and reliable. This information does not constitute a warranty and should be used in conjunction with the project specification document and Quality Assurance manual supplied by Allco Agencies Ltd. Please contact Allco Agencies Ltd with any questions or deviations from this information.
© Allco Agencies Ltd 2006



For Technical Advice Contact:

**Peter Stevens or
Alex Valentine**

(0275) 420 225 (PS)
(0275) 420 228 (AV)