

VOLCLAY® WATERPROOFING SYSTEM

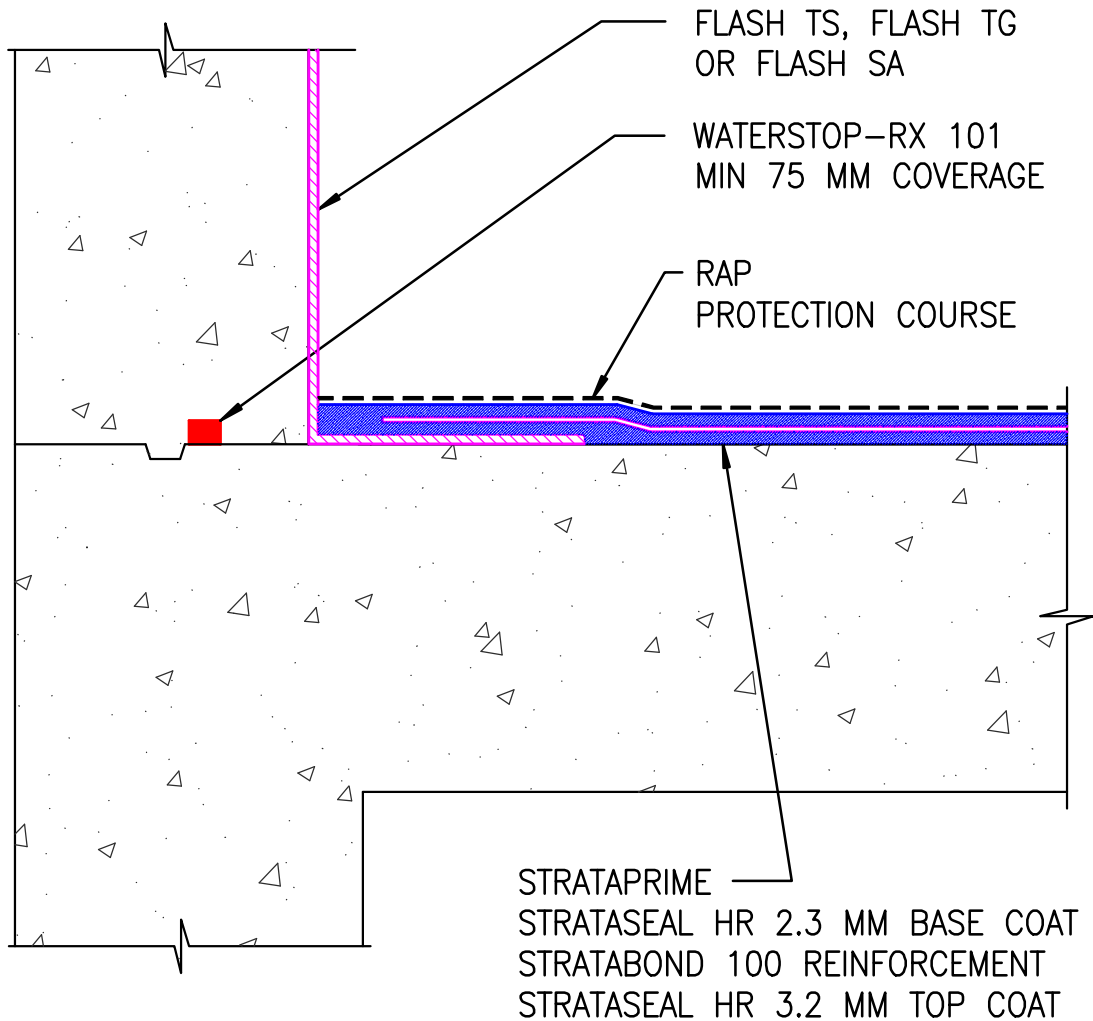
DETAIL

CONCRETE DECK

Reinforced Hot Rubber Cold Pour Joint

HR-420

No Scale - 07/06



The information and data contained herein are believed to be accurate and reliable.
This information does not constitute a warranty and should be used in conjunction with the
project specification document and Quality Assurance manual supplied by Allco Agencies Ltd
Please contact Allco Agencies Ltd with any questions or deviations from this information.
© Allco Agencies Ltd 2006



For Technical Advice Contact:

**Peter Stevens or
Alex Valentine**

(0275) 420 225 (PS)
(0275) 420 228 (AV)