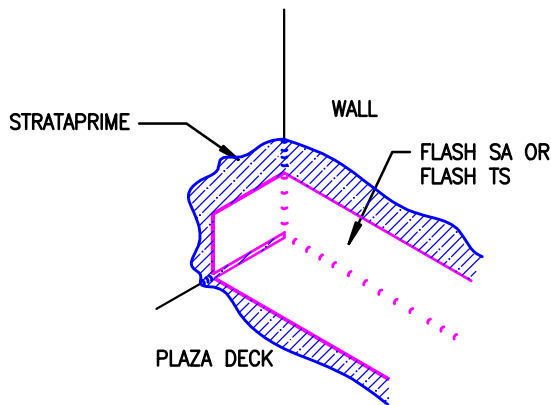


PLAZA DECK

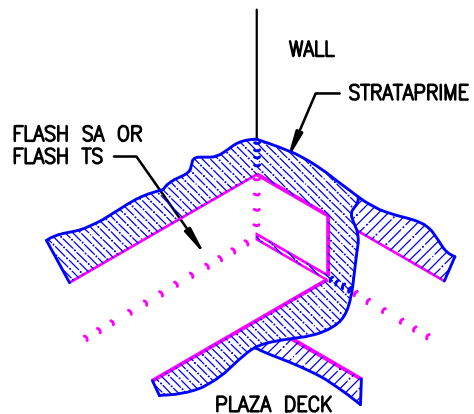
Deck to Wall Inside Corner Detail

HR-410

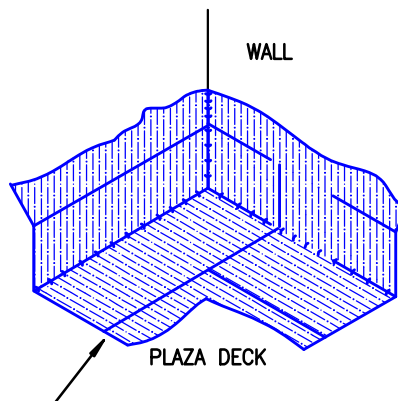
No Scale - 07/06



STEP 1 APPLY STRATAPRIME AND INSTALL FIRST LAYER OF FLASHING AS SHOWN



STEP 2 APPLY ANOTHER LAYER OF STRATAPRIME AND INSTALL SECOND LAYER OF FLASHING AS SHOWN



STEP 3 COMPLETELY COAT FLASHING WITH STRATASEAL HR IMMEDIATELY AFTER INSTALLATION



The information and data contained herein are believed to be accurate and reliable. This information does not constitute a warranty and should be used in conjunction with the project specification document and Quality Assurance manual supplied by Allco Agencies Ltd. Please contact Allco Agencies Ltd with any questions or deviations from this information. © Allco Agencies Ltd 2006



For Technical Advice Contact:

**Peter Stevens or
Alex Valentine**

(0275) 420 225 (PS)
(0275) 420 228 (AV)