

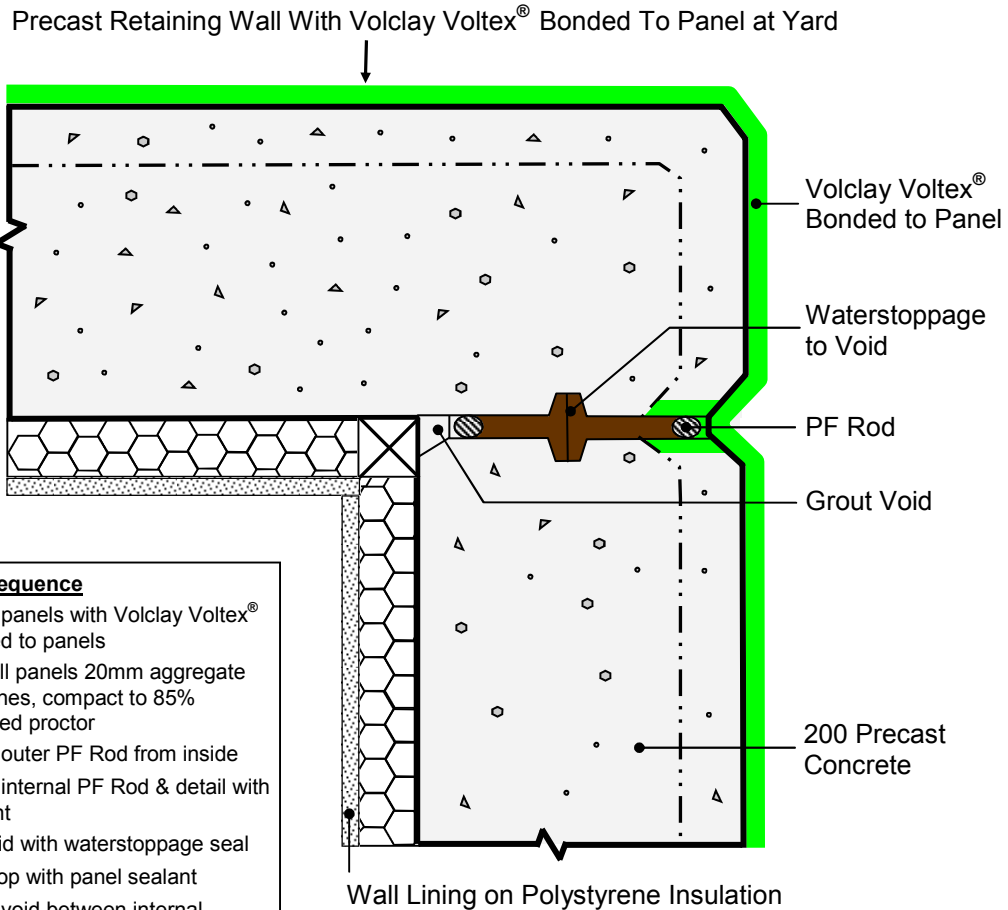
VOLCLAY® WATERPROOFING SYSTEM

DETAIL

Precast Wall Corner Detail No Access

DC-904

No Scale—12/06



Detail Sequence

- Place panels with Volclay Voltex® bonded to panels
- Backfill panels 20mm aggregate with fines, compact to 85% modified proctor
- Place outer PF Rod from inside
- Place internal PF Rod & detail with sealant
- Fill void with waterstoppage seal
- Seal top with panel sealant
- Grout void between internal PF Rod & batton



The information and data contained herein are believed to be accurate and reliable. This information does not constitute a warranty and should be used in conjunction with the project specification document and Quality Assurance manual supplied by Allco Agencies Ltd. Please contact Allco Agencies Ltd with any questions or deviations from this information.

© Allco Agencies Ltd 2006



For Technical Advice Contact:

**Peter Stevens or
Alex Valentine**

(0275) 420 225 (PS)

(0275) 420 228 (AV)