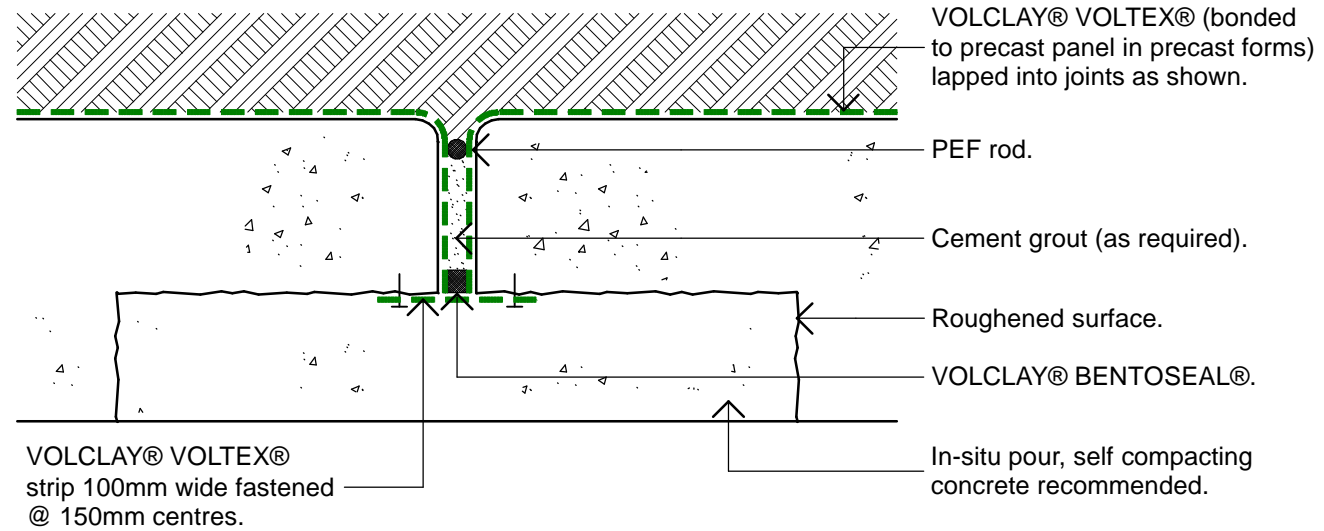


Backfill: 24/7 or River Run poorly graded with fines. If aggregate is over 25mm, protection is required. Compact to 85% Modified Proctor Density (Refer Tech Detail 205 in Specification/On-site QA Manual).

1. Place panel.
2. Drypack as required.
3. VOLCLAY® BENTOSEAL®
4. Pin 100mm wide strip VOLCLAY® VOLTEX® every 150mm centres.
5. Self compacting concrete is highly recommended in stitch joint to help eliminate boney aggregate.



### Stitch Joint Detail

Scale 1:5 (A3)

## VOLCLAY® WATERPROOFING SYSTEM

### STITCH JOINT DETAIL VOLTEX®

**DETAIL**

**VT-964**

SCALE: 1:5 (A3)

REVISION: A (September 2007)



The information and data contained herein are believed to be accurate and reliable. This information does not constitute a warranty and should be used in conjunction with the project specification document and Quality Assurance manual supplied by Allco Agencies Ltd. Please contact Allco Agencies Ltd with any questions and deviations from this information. All drawings are subject to copyright. Unauthorised use is prohibited. © Allco Agencies 2007



For Technical Advice Contact:

**Peter Stevens**  
**(0275) 420 225 (PS)**

**Alex Valentine**  
**(0275) 420 228 (AV)**