

VOLCLAY® VOLTEX® (bonded to precast panel in precast forms) lapped into joints as shown.

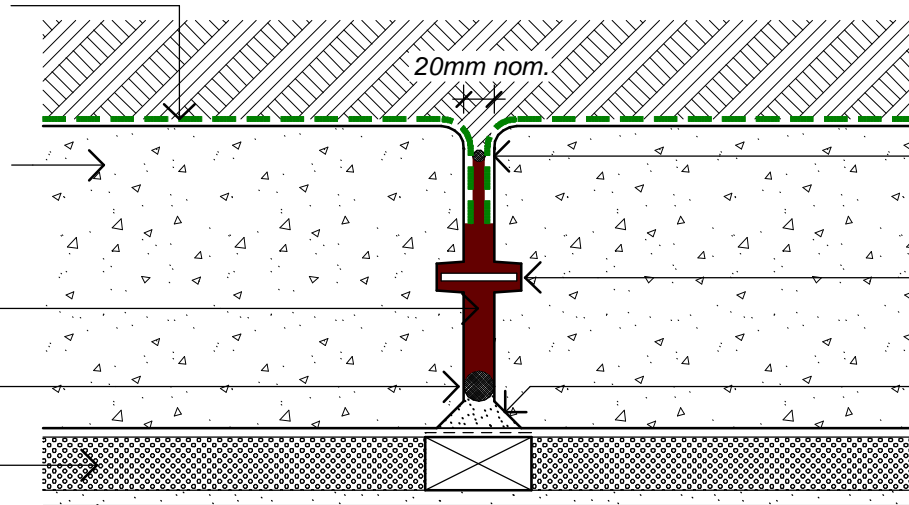
Precast Panel (refer Engineers Design & Documentation), with VOLCLAY® VOLTEX® bonded to Precast Panel in precast forms at Precast Yard.

VOLCLAY® WATERSTOPPAGE® to void.

PEF rod.

Selected Polystyrene insulation.

Selected wall lining on selected timber battens & DPC.



Backfill: 24/7 or River Run poorly graded with fines. If aggregate is over 25mm, protection is required. Compact to 85% Modified Proctor Density (Refer Tech Detail 205 in Specification/On-site QA Manual).

PEF rod.

Baffle (Optional).

Grout void.

1. Place panels with VOLCLAY® VOLTEX® bonded to panels.
2. Backfill panels with 24mm aggregate with fines, compact to 85% Modified Proctor.
3. Place outer PEF rod from inside face.
4. Place internal PEF rod & detail with sealant.
5. Fill void with VOLCLAY® WATERSTOPPAGE® seal.
6. Seal top with panel sealant.
7. Grout void between internal PEF rod and batten.

Precast Panel Vertical Joint Detail

Scale 1:5 (A3)

VOLCLAY® WATERPROOFING SYSTEM

PRECAST PANEL Vertical Joint Detail

DETAIL

VT-904

SCALE: 1:5 (A3)

REVISION: A (September 2007)



The information and data contained herein are believed to be accurate and reliable. This information does not constitute a warranty and should be used in conjunction with the project specification document and Quality Assurance manual supplied by Allco Agencies Ltd. Please contact Allco Agencies Ltd with any questions and deviations from this information. All drawings are subject to copyright. Unauthorised use is prohibited. © Allco Agencies 2007



For Technical Advice Contact:

Peter Stevens
(0275) 420 225 (PS)

Alex Valentine
(0275) 420 228 (AV)