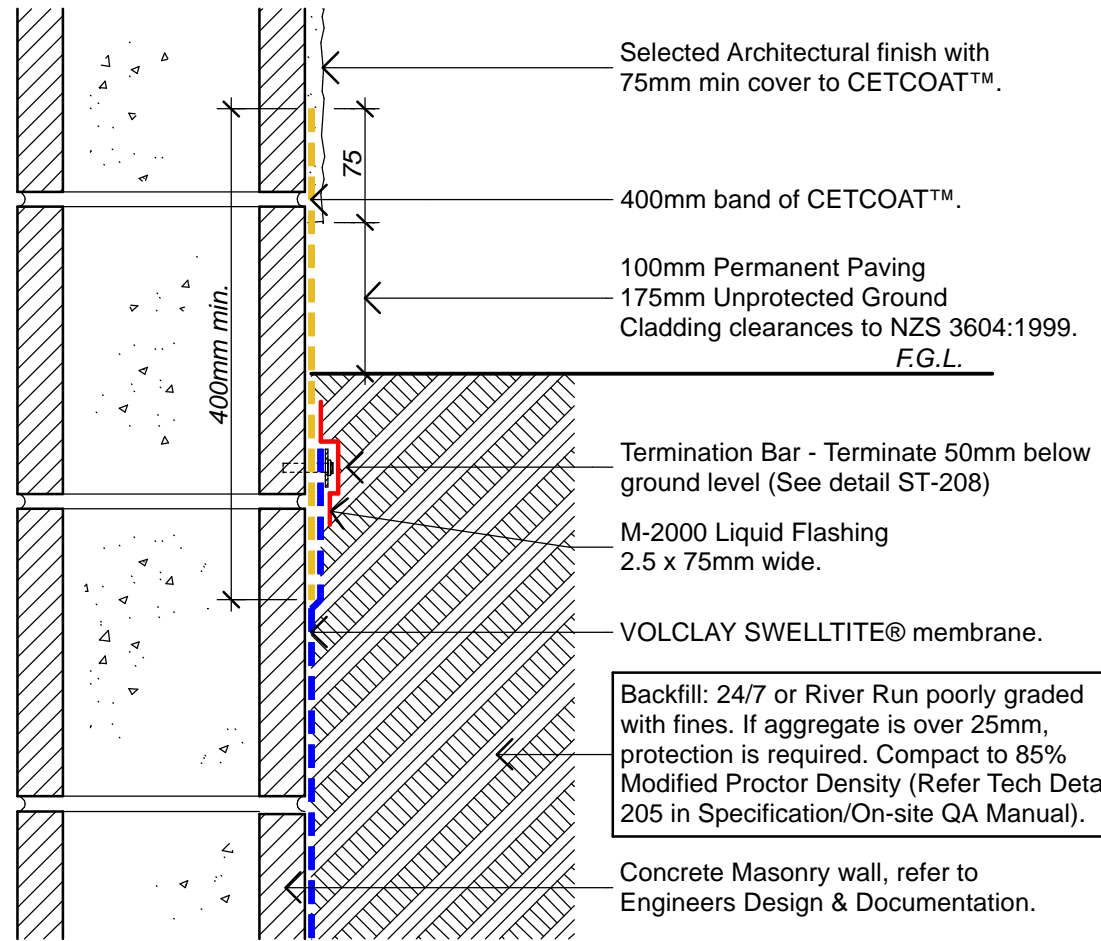


**Masonry Block or Precast Panel**

**Detailing Sequence:**

- Apply application of CETCOAT™ with mason's brush.
- While still damp fasten termination bar 400mm on centre detail with M-2000 liquid flashing.
- Apply second application of CETCOAT™ - See CETCOAT™ Tech detail for full specification.



**Ground Level Termination**

Scale 1:5 (A3)

**VOLCLAY® WATERPROOFING SYSTEM**

**GROUND LEVEL TERMINATION  
SWELLTITE®**

**DETAIL**

**ST-208C**

SCALE: 1:5 (A3)

REVISION: A (September 2007)



The information and data contained herein are believed to be accurate and reliable. This information does not constitute a warranty and should be used in conjunction with the project specification document and Quality Assurance manual supplied by Allco Agencies Ltd. Please contact Allco Agencies Ltd with any questions and deviations from this information. All drawings are subject to copyright. Unauthorised use is prohibited. © Allco Agencies 2007



For Technical Advice Contact:

**Peter Stevens**  
**(0275) 420 225 (PS)**

**Alex Valentine**  
**(0275) 420 228 (AV)**